



...ying, "Now the
LORD
has given us
...om and we will

in the land."
Genesis 26:22b

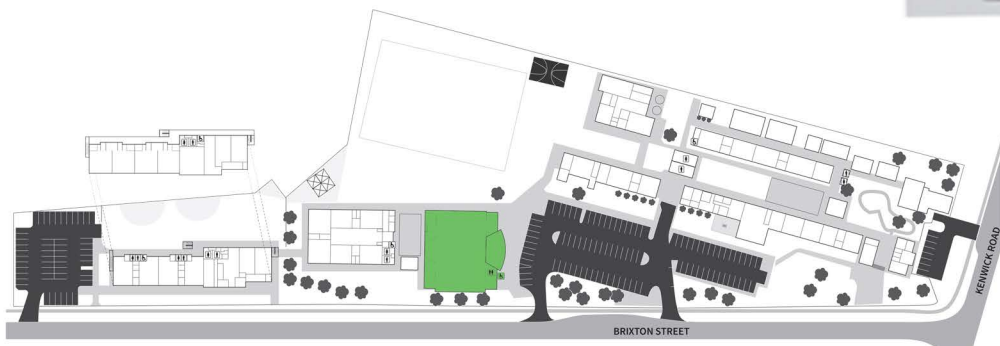
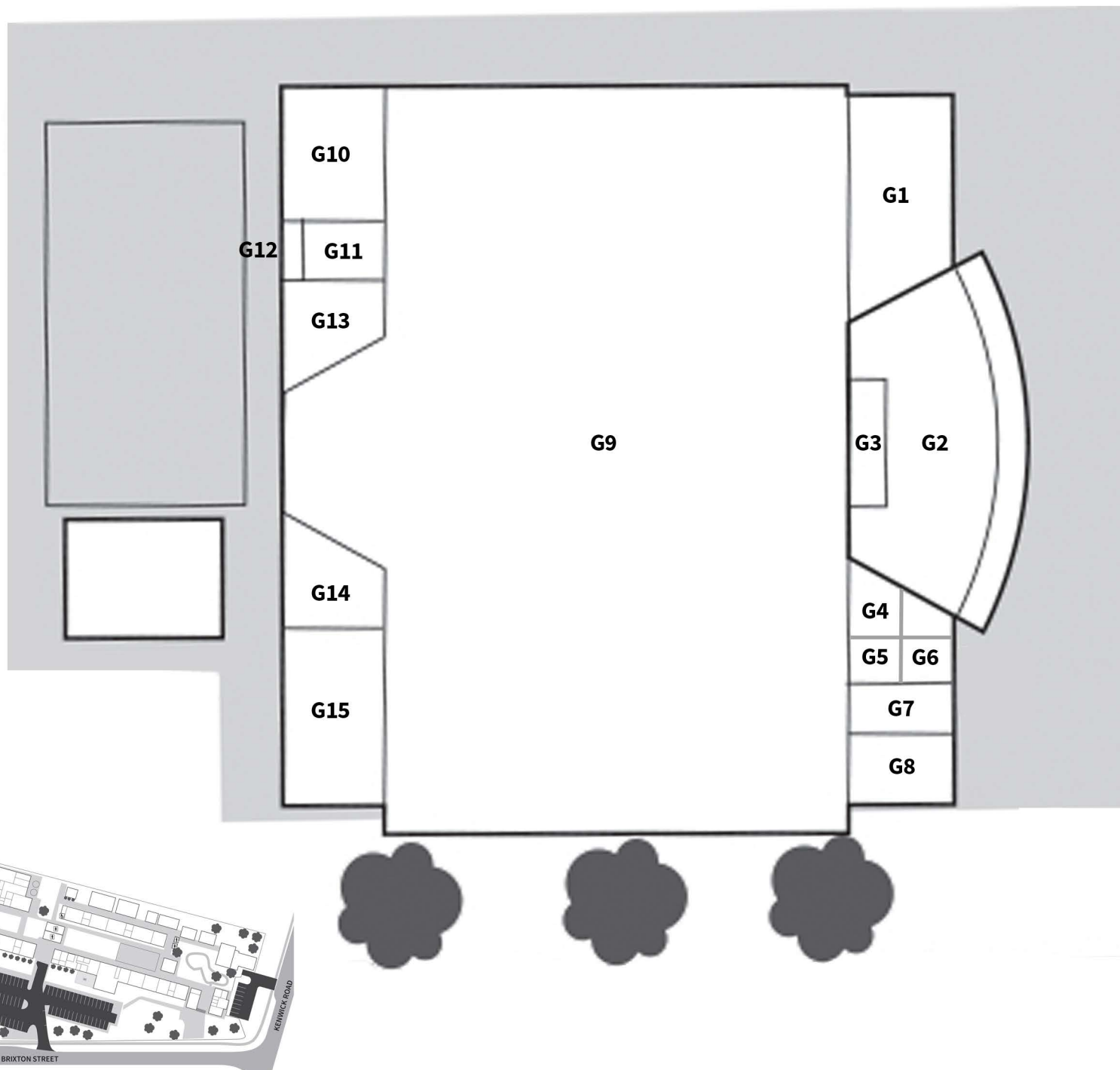


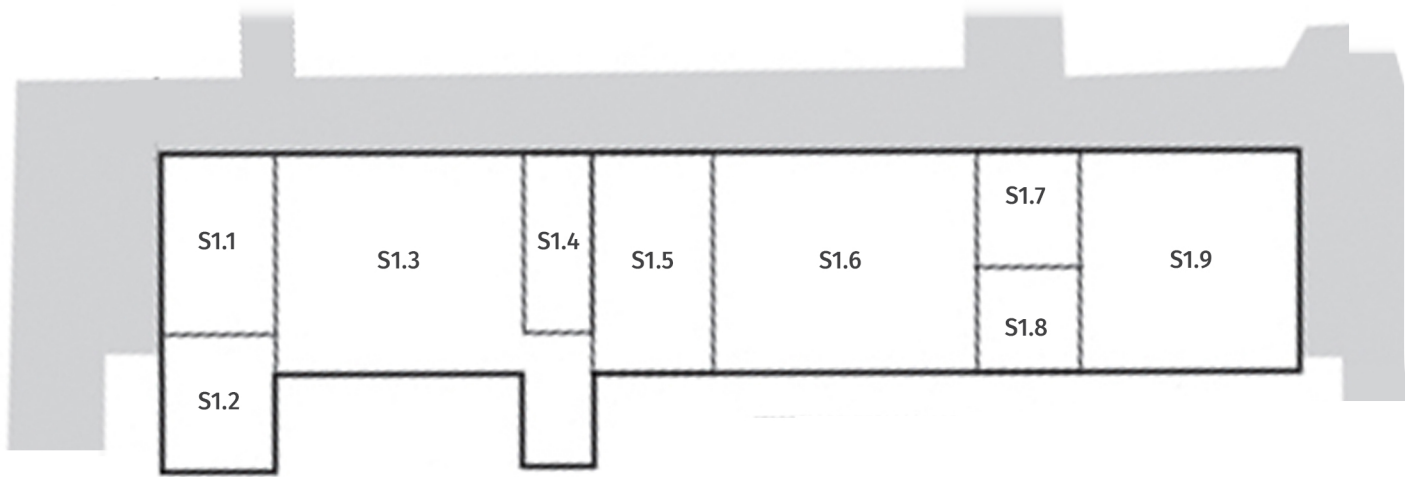
CAMPUS MAPS

KENWICK SECONDARY

GYMNASIUM BLOCK

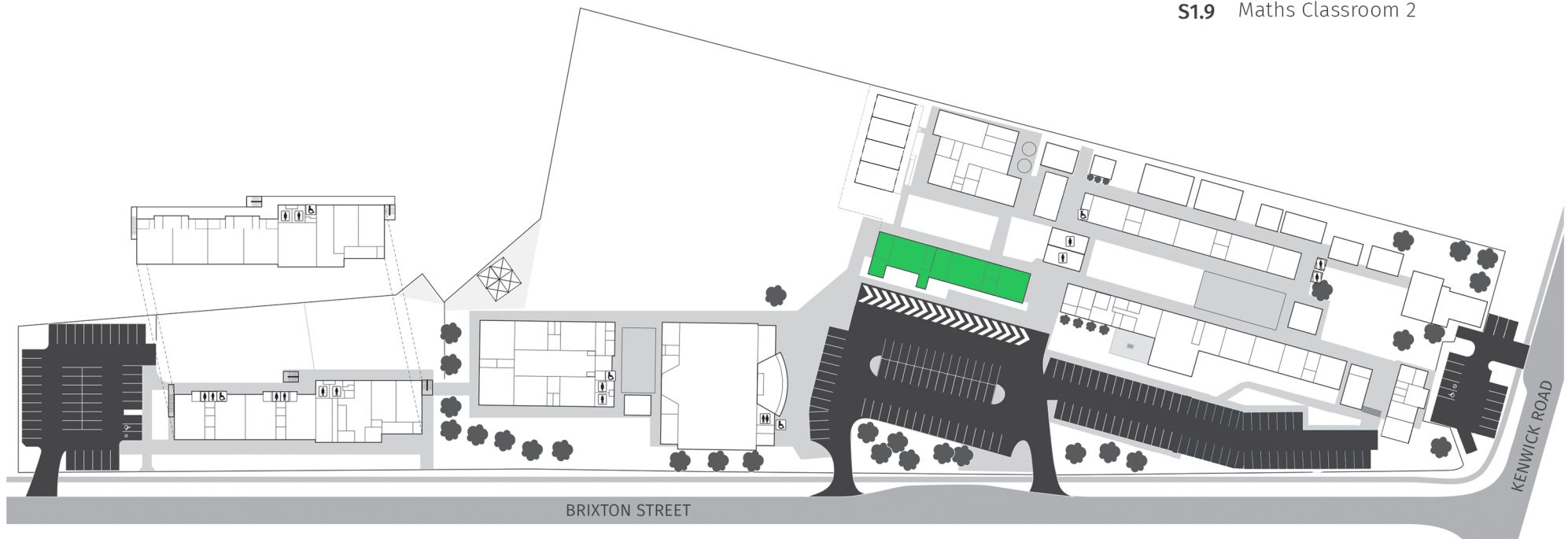
- G1** Canteen
- G2** Foyer
- G3** Sound Booth
- G4** Toilet (Male)
- G5** Toilet (Female)
- G6** Toilet (Disabled)
- G7** Store 1
- G8** Store 2
- G9** Gymnasium
- G10** Store 3
- G11** Store 4
- G12** Store 5 (External)
- G13** Rear Lobby
- G14** Green Room
- G15** Uniform Shop





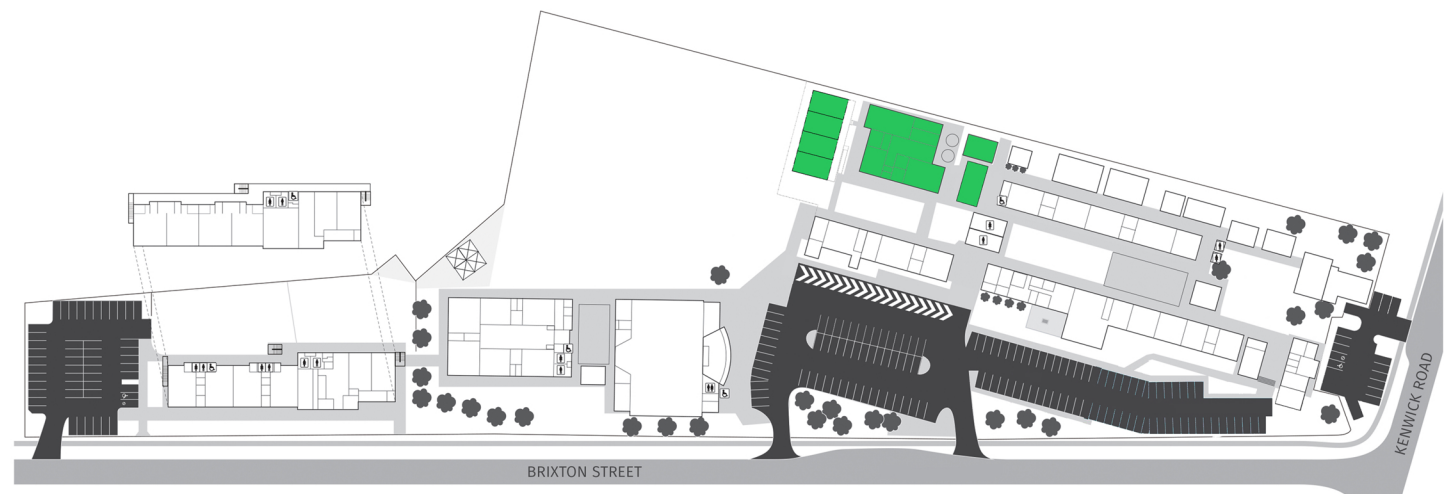
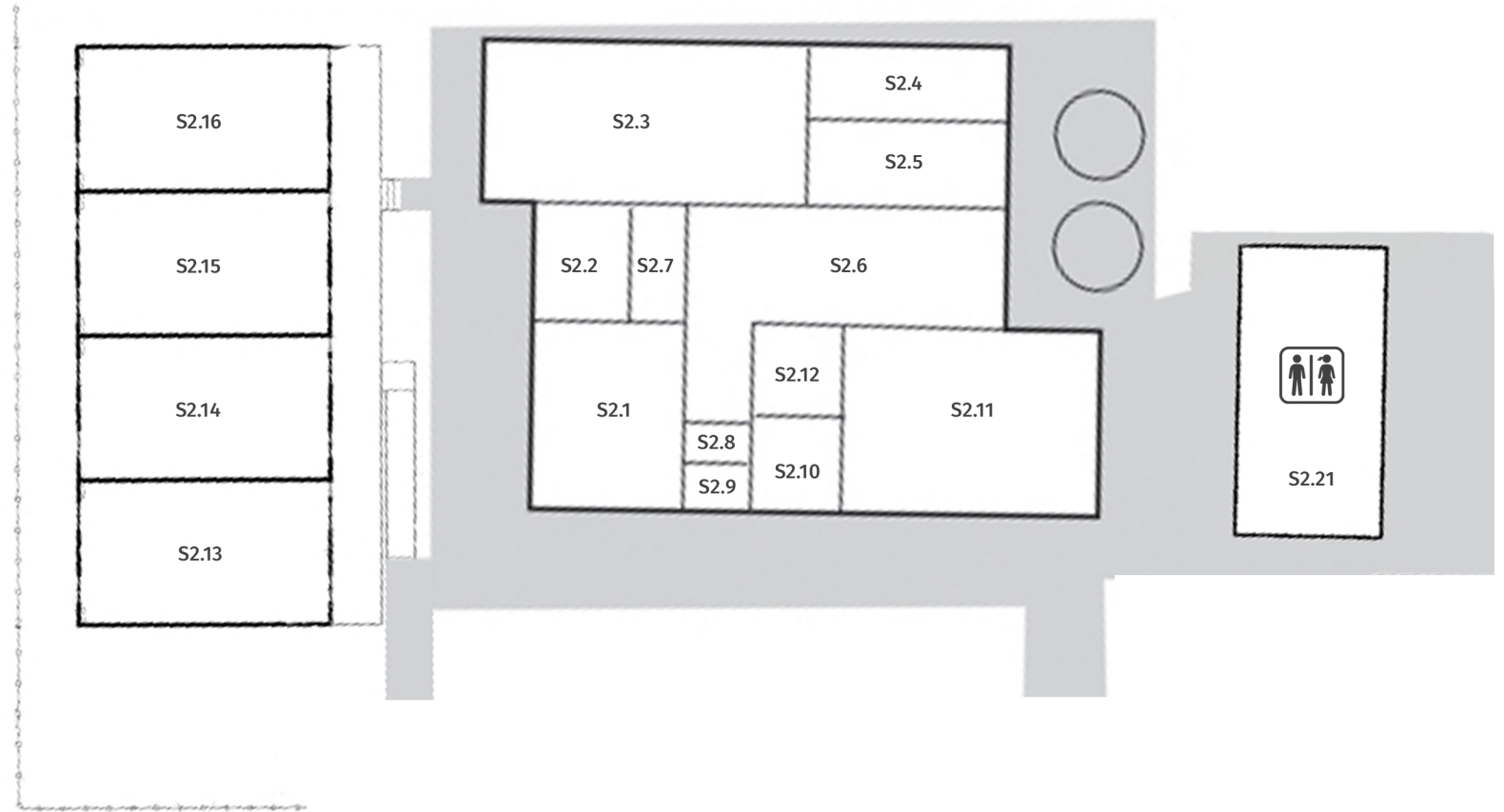
SECONDARY BLOCK 1 FOOD TECHNOLOGY AND MATHS CLASSROOMS

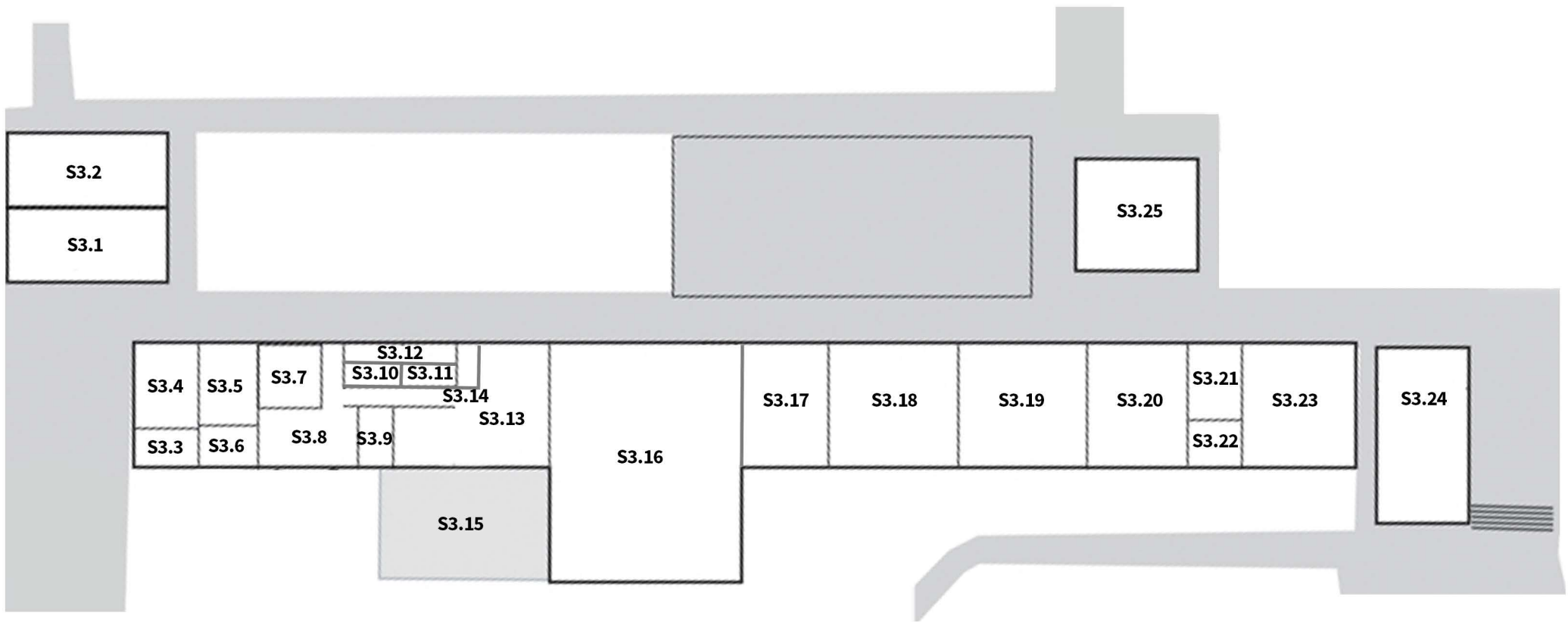
- S1.1** Health and PE Staff Office
- S1.2** Laundry
- S1.3** Food Science and Technology Classroom
- S1.4** Chaplains Office
- S1.5** Languages Classroom
- S1.6** Maths Classroom 1
- S1.7** Maths Staff Office
- S1.8** Maths Store
- S1.9** Maths Classroom 2



SECONDARY BLOCK 2 DESIGN, TECHNOLOGY VISUAL ARTS, MUSIC

- S2.1** Visual Arts Classroom
- S2.2** VET Classroom/Office
- S2.3** D&T Workshop
- S2.4** D&T Store
- S2.5** D&T Machine Room
- S2.6** Visual Arts workshop
- S2.7** D&T/Arts Staff Office
- S2.8** Visual Arts Store 1
- S2.9** Visual Arts Store 2
- S2.10** Music Rehearsal Room
- S2.11** Music Classroom
- S2.12** Classroom Store
- S2.13** General Classroom
- S2.14** General Classroom
- S2.15** Drama Classroom
- S2.16** Digital Technology Classroom
- S2.21**



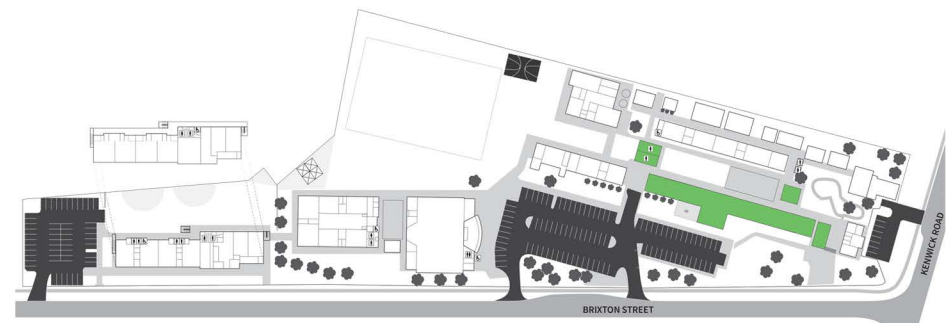


**SECONDARY BLOCK 3
ADMINISTRATION, LRC AND CLASSROOMS**

- S3.1** Toilets (Male)
- S3.2** Toilets (Female)
- S3.3** Server Room
- S3.4** Principal's Office
- S3.5** Secondary Reception
- S3.6** Office
- S3.7** Meeting Room
- S3.8** Teacher Prep Area
- S3.9** Sick Bay
- S3.10** Staff Toilet (Female)
- S3.11** Staff Toilet (Male)

- S3.12** Cleaners Store
- S3.13** Staff Room
- S3.14** Staff Room Store
- S3.15** Staff Courtyard
- S3.16** Learning Resource Centre
- S3.17** Reading Room
- S3.18** Classroom 1
- S3.19** Classroom 2
- S3.20** Classroom 3
- S3.21** English Staff Office
- S3.22** English Store

- S3.23** Classroom 4
- S3.24** Classroom 5
- S3.25** Classroom 6

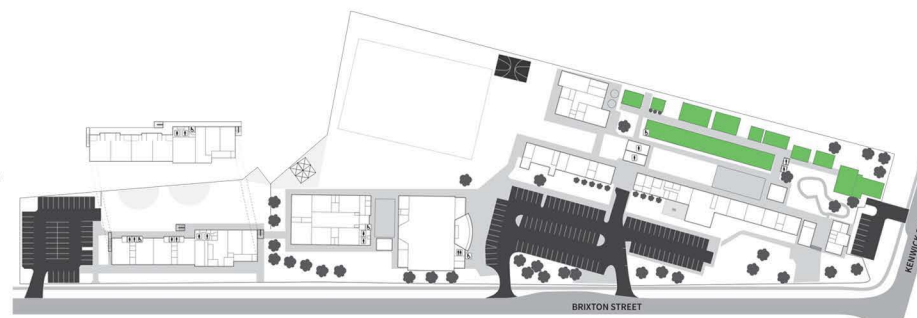




**SECONDARY BLOCK 4
CLASSROOMS AND DEMOUNTABLES**

- S4.1** ICT Office
- S4.2** Toilet (Disabled)
- S4.3** Classroom 7
- S4.4** Store
- S4.5** Staff Office
- S4.6** Classroom 8
- S4.7** Science Lab 1
- S4.8** Science Lab 1 Store
- S4.9** Science Lab 2 Store
- S4.10** Science Lab 2
- S4.11** Classroom
- S4.12** Classroom (Demountable)

- S4.13** Maintenance Shed
- S4.14** Classroom (Demountable)
- S4.15** Classroom (Demountable)
- S4.16** 2nd Hand Uniforms/Maintenance Office
- S4.17** Storage Shed
- S4.18** Classroom
- S4.19** Classroom
- S4.20** Staff Office
- S4.21** Toilets (Male)
- S4.22** Toilets (Female)
- S4.23** Learning Support Centre



BUSINESS OFFICE

- B1** Reception
- B2** CEO Office
- B3** Finance Manager Office
- B4** Interview Room
- B5** Board Room
- B6** Lunch Room
- B7** Toilet
- B8** Store
- B9** Finance Office
- B10** Projects/HR Office

